

# Recovered Materials Data



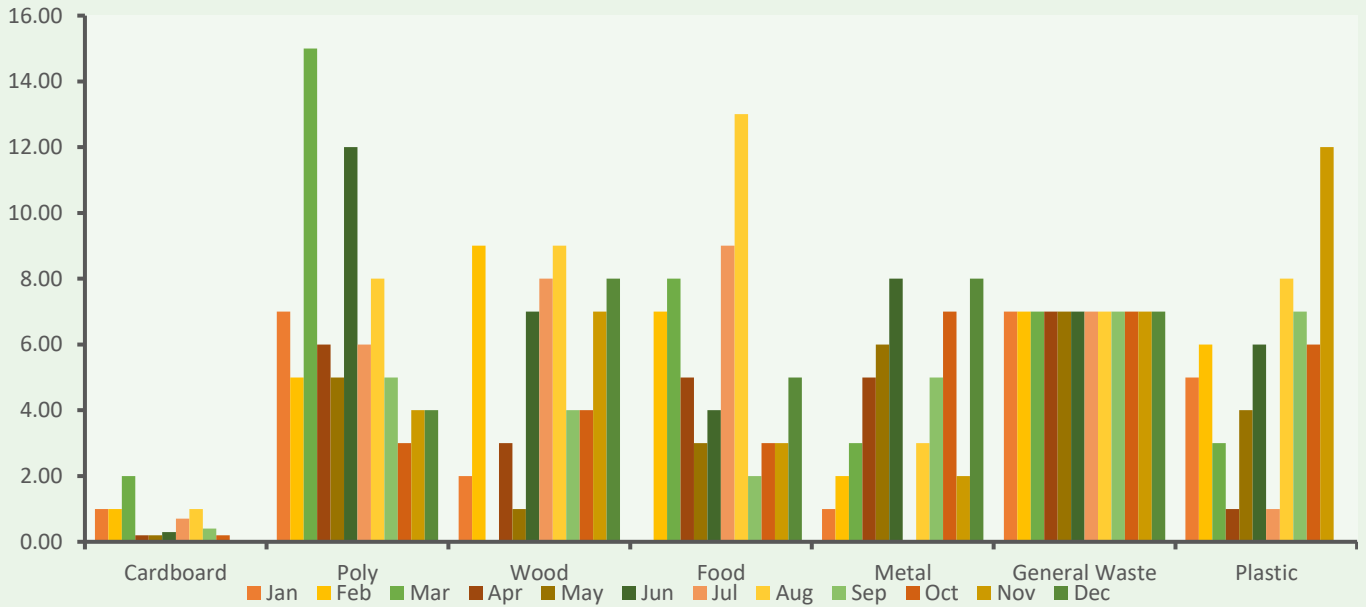
Do you know the source of energy for the paper mill?

- Paper mill uses combined heat and power (default)    Paper mill uses separate sources for heat and power

MONTHLY INPUT OF TONNES

	Jan	Feb	Mar	Apr	May	Jun	Jul	Aug	Sep	Oct	Nov	Dec	Annual
Cardboard	1.00	1.00	2.00	0.20	0.20	0.30	0.70	1.00	0.40	0.20	0.01	0.01	7.02
Poly	7.00	5.00	15.00	6.00	5.00	12.00	6.00	8.00	5.00	3.00	4.00	4.00	80.00
Wood	2.00	9.00	0.00	3.00	1.00	7.00	8.00	9.00	4.00	4.00	7.00	8.00	62.00
Food		7.00	8.00	5.00	3.00	4.00	9.00	13.00	2.00	3.00	3.00	5.00	62.00
Metal	1.00	2.00	3.00	5.00	6.00	8.00	0.00	3.00	5.00	7.00	2.00	8.00	50.00
General Waste	7.00	7.00	7.00	7.00	7.00	7.00	7.00	7.00	7.00	7.00	7.00	7.00	84.00
Plastic	5.00	6.00	3.00	1.00	4.00	6.00	1.00	8.00	7.00	6.00	12.00	0.00	59.00
<b>TOTAL</b>	<b>23.00</b>	<b>37.00</b>	<b>38.00</b>	<b>27.20</b>	<b>26.20</b>	<b>44.30</b>	<b>31.70</b>	<b>49.00</b>	<b>30.40</b>	<b>30.20</b>	<b>35.01</b>	<b>32.01</b>	<b>404.02</b>

TONNES OF MATERIAL COLLECTED



ANNUAL BREAKDOWN OF WASTE STREAMS

- Cardboard
- Wood
- Metal
- Plastic
- Poly
- Food
- General Waste

